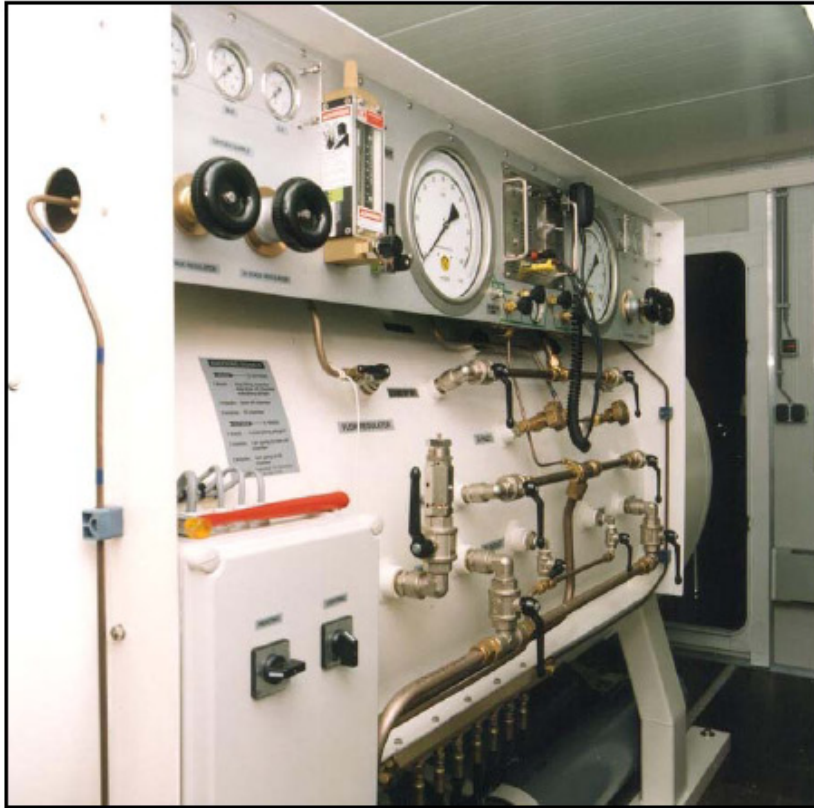


Technical Diving Equipment



POMMEC RECOMPRESSION CHAMBERS



Pommec is able to provide **recompression chambers** to all our customers' requirements, built to the highest standard and in accordance with the Lloyds Register Rules and Regulations for the construction and classification of submersibles and underwater systems, or any other testing authority like D.N.V., A.B.S., Germanischer Lloyd, etc..

Pommec's Recompression Chambers are high quality commercial twin-lock RCCs available in many different sizes. Many new and serviced recompression chambers have left our premises in many different models equipped on customers

requirements.

Stainless steel is used extensively in the construction of the pressure vessels for all components subjected to corrosion or wear including service locks, lifting lugs, bunks, door hinges, mounting brackets and penetrators.

STANDARD EQUIPMENT

- ❑ Pressurization circuit with internal mufflers and lock equalization valve
- ❑ Exhaust circuit with internal anti-suction injury devices and external mufflers
- ❑ Weatherproof control panel with stainless steel trim
- ❑ 160 mm diameter dual scale MSW/FSW depth gauges
- ❑ Oxygen BIB systems with Scott Pressure-Vak II overboard dump masks
- ❑ Robust, high quality three-way intercom system
- ❑ Main lock sample circuit
- ❑ Overpressure relief circuit with safety valve
- ❑ Fully automatic service lock interlock device
- ❑ Viewports for perfect visibility in the chamber interior
- ❑ Easily removable aluminium floor plates

