

# Accessories



## WELDING CONTROL UNIT, PORTABLE VERSION

Mounted in a light weight case  
Dimensions: 406 mm, 305 mm, 210 mm  
Weight 6 Kg



## WELDING CONTROL UNIT, STEEL WALL MOUNTED

Fixed wall mounted enclosure, IP55  
Dimensions: 300 mm, 400 mm, 210 mm  
Weight 12 Kg



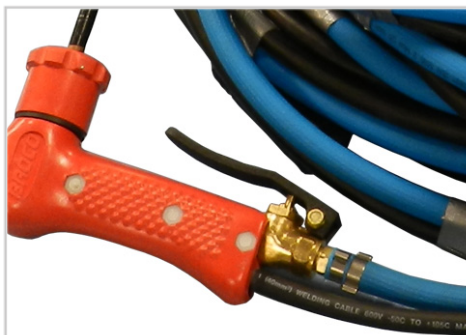
## WELDING CONTROL UNIT, JUNIOR

Steel portable or wall mounted  
Dimensions: 300 mm, 250 mm, 200 mm  
Weight 6 Kg



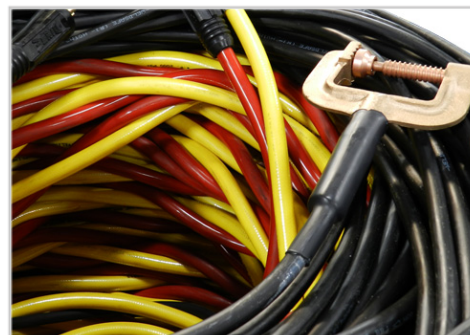
## SPECIAL INVERTER FOR UNDERWATER WELDING

Input Voltage 3x 400V, 50/60 Hz  
Amperage range 4 - 400 A  
H x B x L: 500 x 220 x 365 mm  
Weight: 24 kg



## Cutting / Welding Umbilical Taped version

Main cutting cable (50mm<sup>2</sup>)  
Oxygen hose, blue (taped to main cable)  
Earth cable (50mm<sup>2</sup>)  
Connection cables (50mm<sup>2</sup>)  
Various lengths possible



## Cutting / Welding Umbilical Twisted version

Main cutting cable (50mm<sup>2</sup>)  
Oxygen hose, yellow (twisted to main)  
Earth cable (50mm<sup>2</sup>) (separate)  
Connection cables (50mm<sup>2</sup>)  
Various lengths possible

Technical Diving Equipment Pomtec BV

Conradweg 22  
4612PD Bergen op Zoom  
The Netherlands

T: +31 164 745500  
F: +31 164 745599

E: sales@pomtec.com  
I: www.pomtec.com