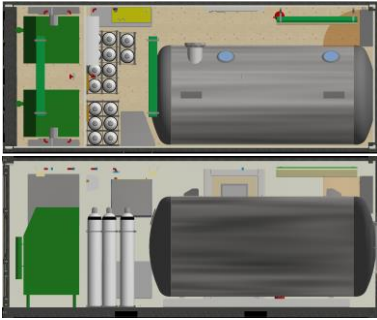
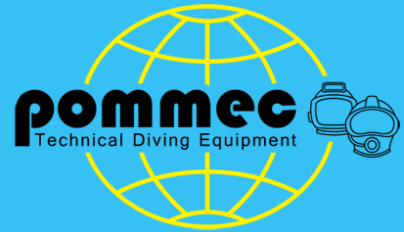
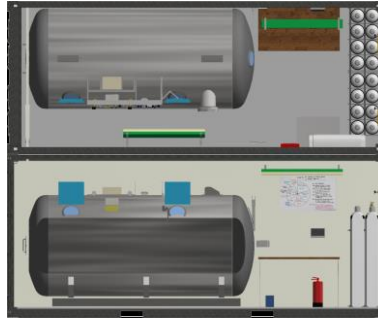


20ft Deco Chamber Container



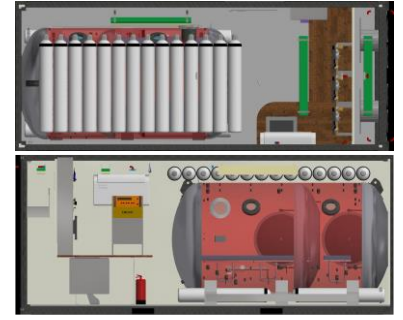
AB0002 DDC1600 + GAS

20ft ISO or Offshore container
DDC1600 Decompression Chamber
2x HP Compressor
HP Gas Bank
IMCA compliant (option; build to Class)



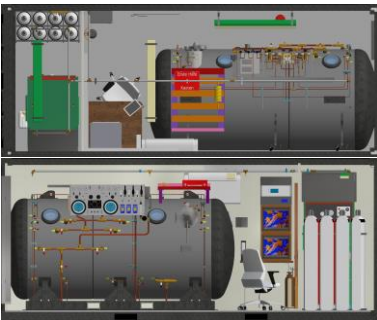
AB0024 DDC1600

20ft ISO or Offshore Container
DDC1600 Decompression Chamber
Operator table
HP Gas Bank
IMCA compliant (option; build to Class)



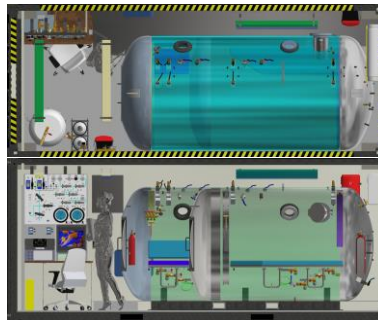
AB0030 DDC1800 + DCR

20ft ISO or Offshore Container
3 diver Control Panel
DDC1800 Decompression Chamber
24x 50L Cylinder Air Bank
IMCA compliant (option; build to Class)



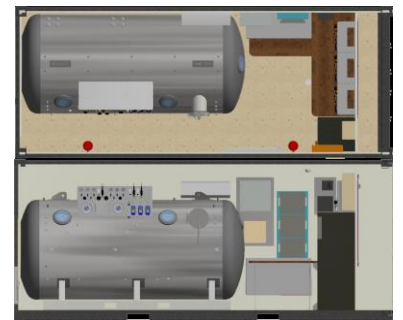
MAB0001 DDC1600 + GAS

20ft ISO or Offshore Container
DDC1600 Decompression Chamber
Operator table
HP Compressor & Gas Bank
IMCA compliant (option; build to Class)



MAB0003 DDC1800

20ft ISO or Offshore Container
DDC1800 Decompression Chamber
Remote Operator Control
Spray Mist System
IMCA compliant (option; build to Class)



MAB0023 DCR + DDC1600

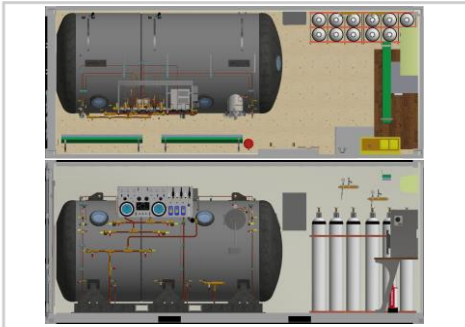
20ft ISO or Offshore Container
3 diver Control Panel
DDC1600 Decompression Chamber
Umbilical Storage
IMCA compliant (option; build to Class)

Technical Diving Equipment Pomtec BV

Conradweg 22
4612PD Bergen op Zoom
The Netherlands

T: +31 164 745500
F: +31 164 745599

E: sales@pomtec.com
I: www.pomtec.com



MAB0026 DDC1600 Video

20ft ISO or Offshore Container
DDC1600 Decompression Chamber
Operator table with video monitoring
HP Gas Bank
IMCA compliant (option; build to Class)