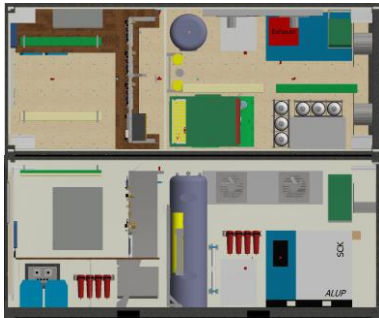
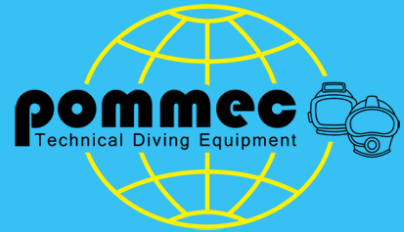
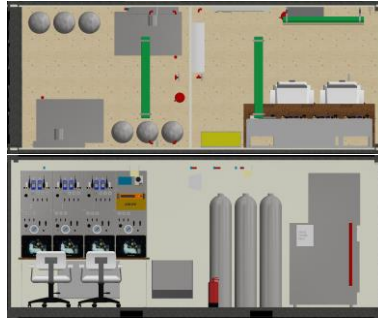


20ft Gas/Machinery Container



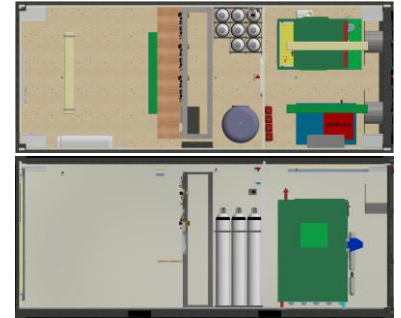
AB0001 Nitrox GAS + DCR

20ft ISO or Offshore container
3 diver Nitrox / Air Control Panel
HP & LP compressor
Nitrox Membrane
IMCA compliant (option; build to Class)



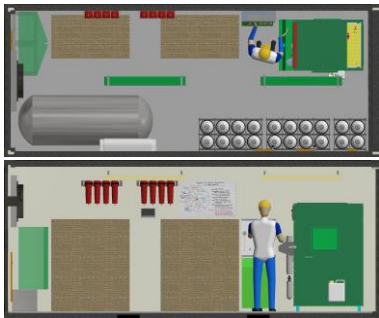
AB0008 GAS + DCR

20ft ISO or Offshore Container
3 diver Control Panel
2x LW HP compressor
6x 140L cylinder HP Air Bank
IMCA compliant (option; build to Class)



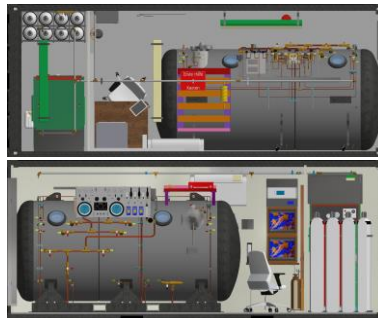
AB0013 GAS + DCR

20ft ISO or Offshore Container
3 diver Control Panel
LP & HP Compressor
LP & HP Gas Bank
IMCA compliant (option; build to Class)



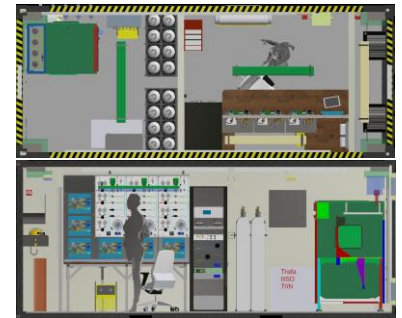
AB0028 GAS

20ft ISO or Offshore Container
2x LP Compressor + 2x 1000ltr Air Bank
HP Compressor + Air bank
IMCA compliant (option; build to Class)



MAB0001 DDC1600 + GAS

20ft ISO or Offshore Container
DDC1600 Decompression Chamber
Operator table
HP Compressor & Gas Bank
IMCA compliant (option; build to Class)



MAB0004 GAS + DCR

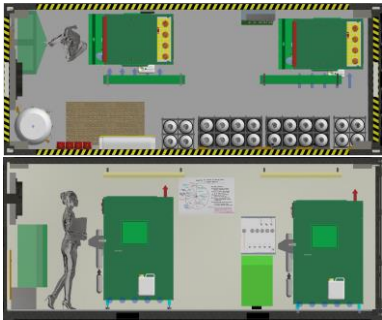
20ft ISO or Offshore Container
3 diver Control Panel
HP Compressor + Air bank
Umbilical Storage
IMCA compliant (option; build to Class)

Technical Diving Equipment Pomtec BV

Conradweg 22
4612PD Bergen op Zoom
The Netherlands

T: +31 164 745500
F: +31 164 745599

E: sales@pomtec.com
I: www.pomtec.com



MAB0006 GAS

20ft ISO or Offshore Container
1x LP Compressor + 2x 1000ltr Air Bank
2x HP Compressor + Air bank
IMCA compliant (option; build to Class)



MAB0025 GAS + Workshop

20ft ISO or Offshore Container
Technician Workshop
HP & LP compressor
Nitrox Membrane
IMCA compliant (option; build to Class)



MAB0024 GAS + Workshop

20ft ISO or Offshore Container
Technician Workshop
HP & LP compressor
IMCA compliant (option; build to Class)