

CHASING M2 PRO

Hybrid power supply

Stronger power

More accessories



Light Industrial grade underwater ROV for
professional and enterprise customers.



CHASING M2 Pro

is a professional underwater ROV designed for professional users and industrial applications. M2 Pro has 8 Vectored Thrusters layout which allows OMNI movement in all directions. Compared to the CHASING M2, the M2 Pro motor has been upgraded by 50%. The Maximum speed is 4 Knots, depth is 150 meters (490 FT) and the maximum horizontal radius is 400 meters (1300FT). M2 pro support AC and battery hybrid power supply to achieve unlimited battery life. Not only compatible with sophisticated attachments such as Grabber Claw, Floodlight and laser scaler etc, but also compatible with Control Console (High-brightness Screen), Docking station, USBL underwater positioning, 700Wh battery, Multibeam sonar, Auxiliary Camera and other M2 Pro Exclusive Enhanced Accessories. CHASING M2 Pro offers a built in 4K/ 1080p and 12 megapixel EIS image stabilization camera, 4000 lumen LED lights, removable battery and removable Micro SD memory card. The aluminum alloy compact body (weighs less than 6KG / 13lbs) allows single person operation and Quick-Deployment in 3 minutes. The CHASING M2 Pro is your portable, easy use and reliable light industrial underwater ROV.



Stronger power,
4 Knots Speed



700Wh battery,
5 hours battery life



Unlimited battery life
with AC power supply



USBL underwater positioning,
Multibeam sonar and
more accessories



Maximum dive depth
150 meters(490 FT)



4K+EIS Image
Stabilization,
F1.8 Aperture

Stronger power, 4 Knots speed

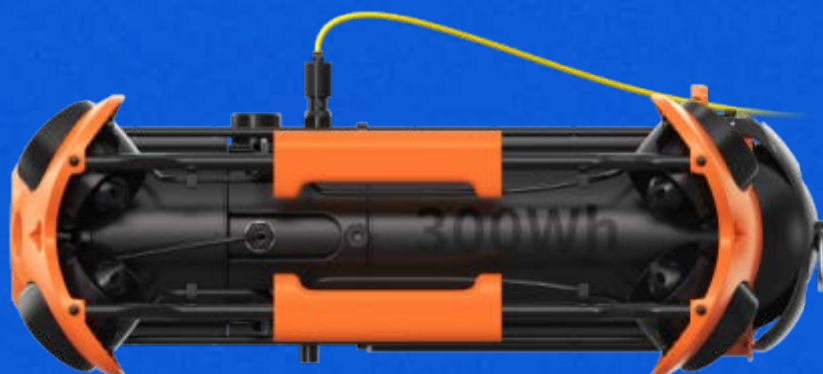
→ 8 Vectored-Thrusters Layout, Anti-Stuck Motor.

→ Single motor power 150W, allows OMNI movement in all directions with 4 Knots speed(2m/s).



700Wh battery, 5 hours battery life

The default 300Wh lithium battery , Optional 700Wh Replaceable Battery(support Hybrid power supply) will make your operation time unlimited.



  Optional



Unlimited battery life with **AC power supply**

Support AC power supply (optional), to achieve truly unlimited battery life.



USBL underwater positioning, Multibeam sonar and **more accessories**

Control Console (High-brightness Screen), Docking station, USBL underwater positioning, 700Wh battery, Multibeam sonar, Auxiliary Camera and other M2 Pro Exclusive Enhanced Accessories

Multibeam sonar



Support model:
Blueprint
Oculus/M370S/M750D/M1200D
More models are expanding...

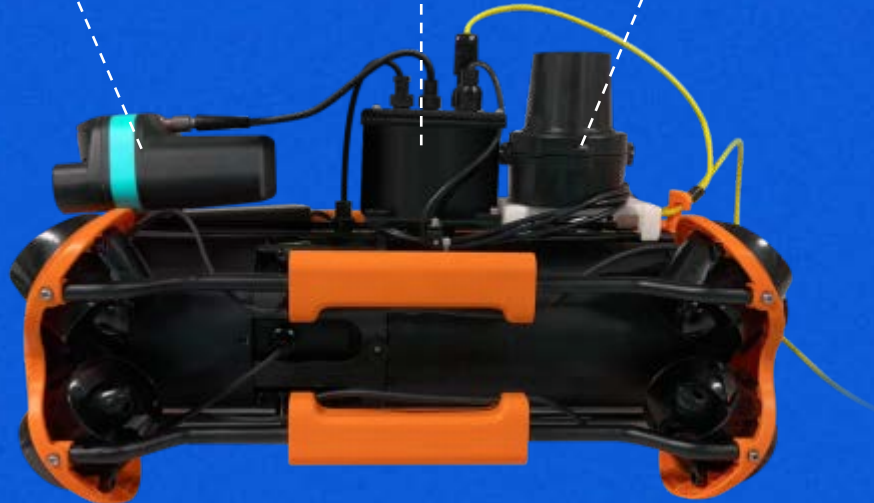
Docking station




USBL underwater positioning

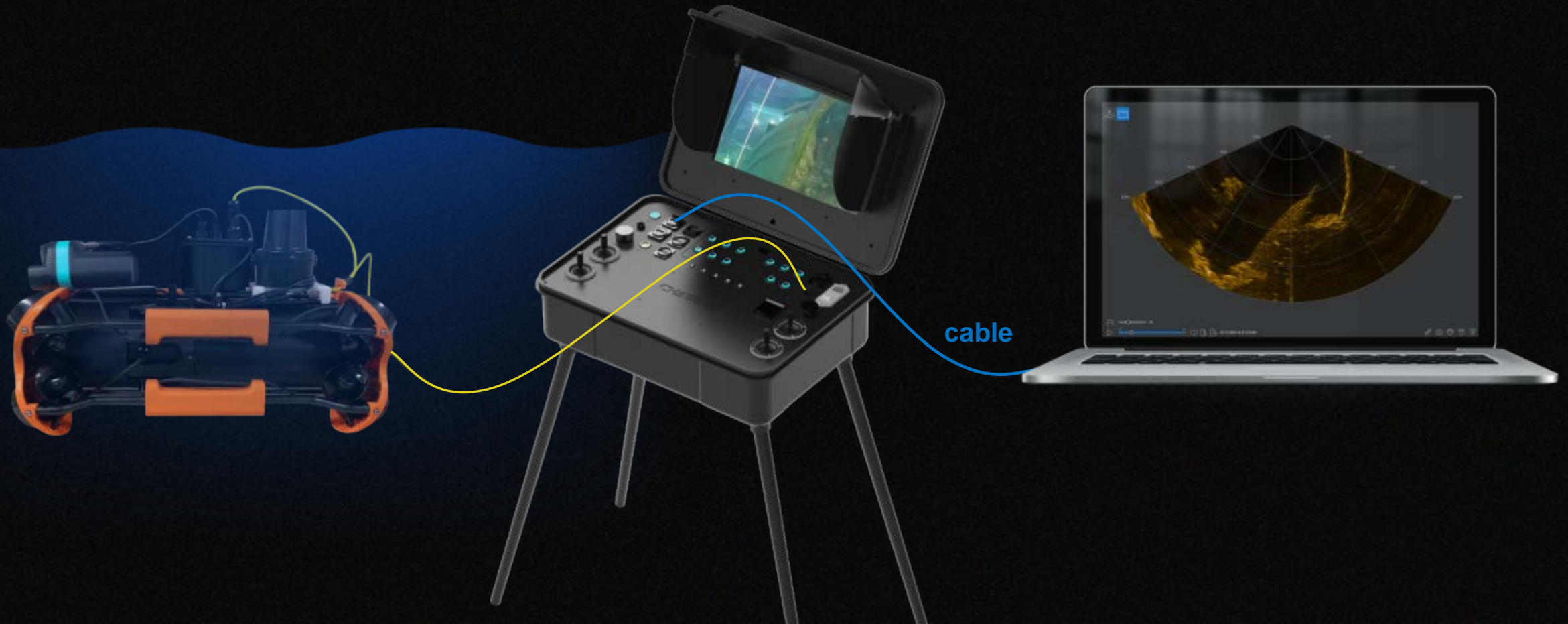


Support model:
Cerulean usbl sonar
More models are expanding...

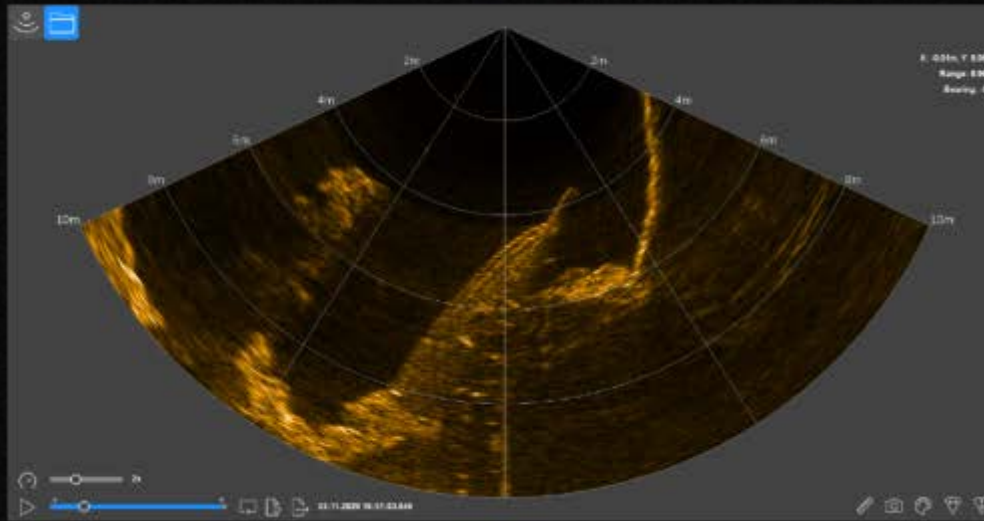


USBL underwater positioning, Multibeam sonar and **more accessories**

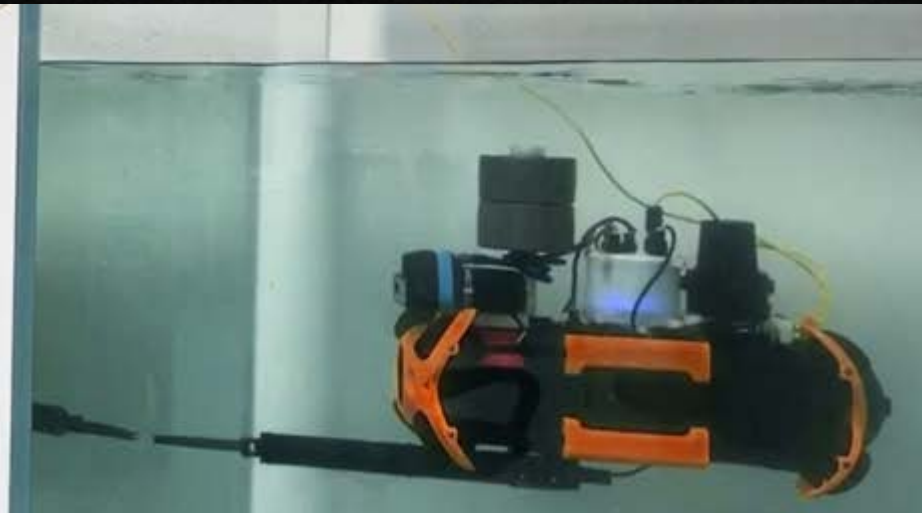
 Multibeam sonar



Multibeam sonar — ship

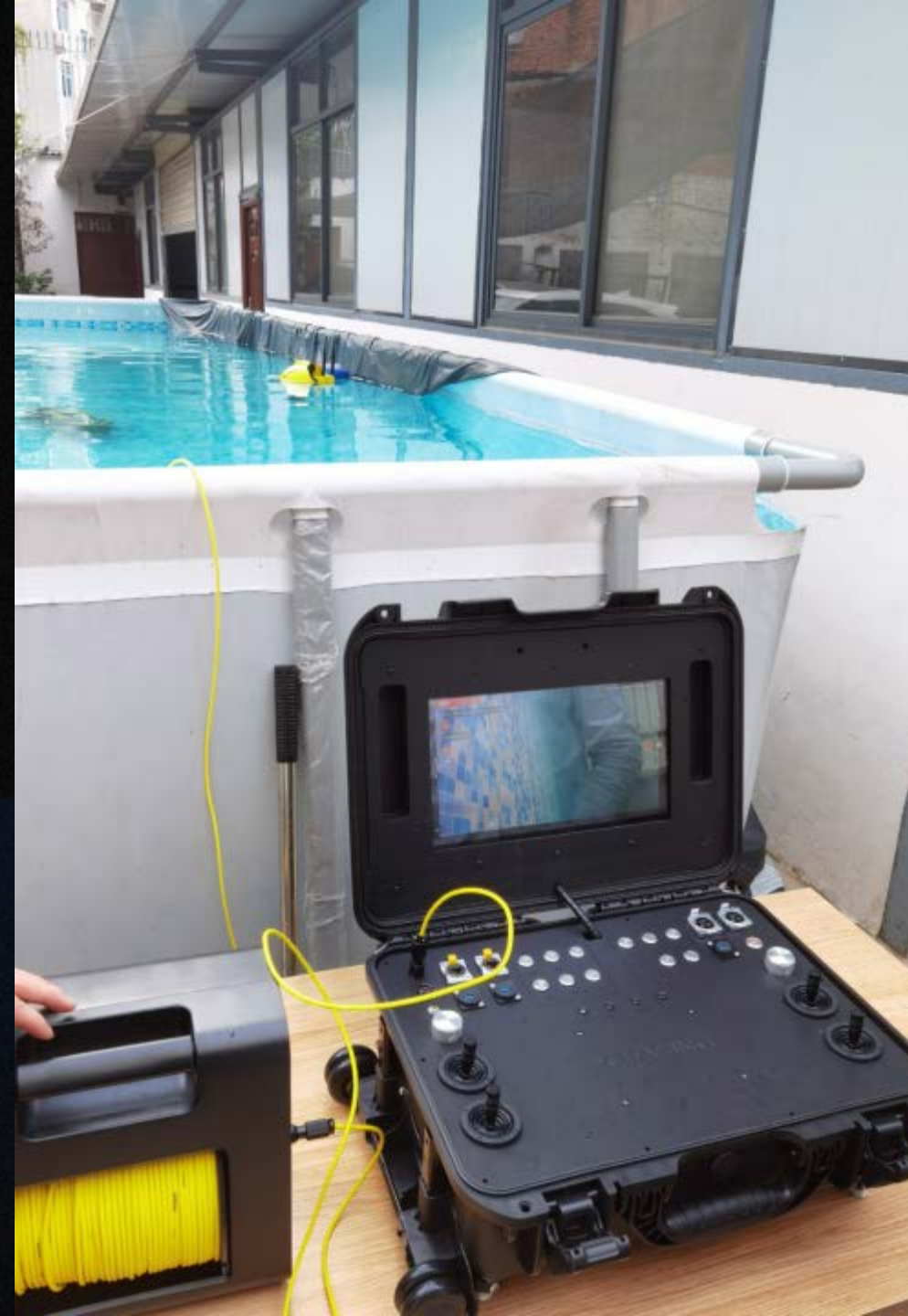
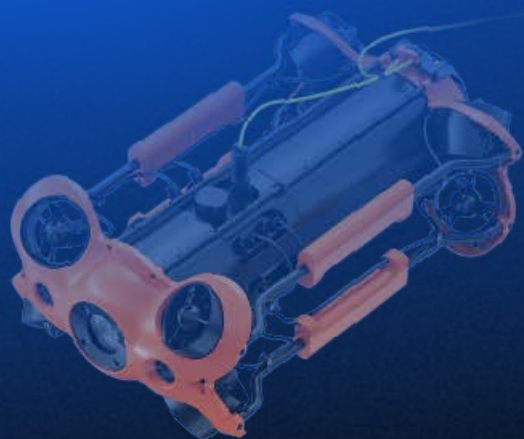


Multibeam sonar — test

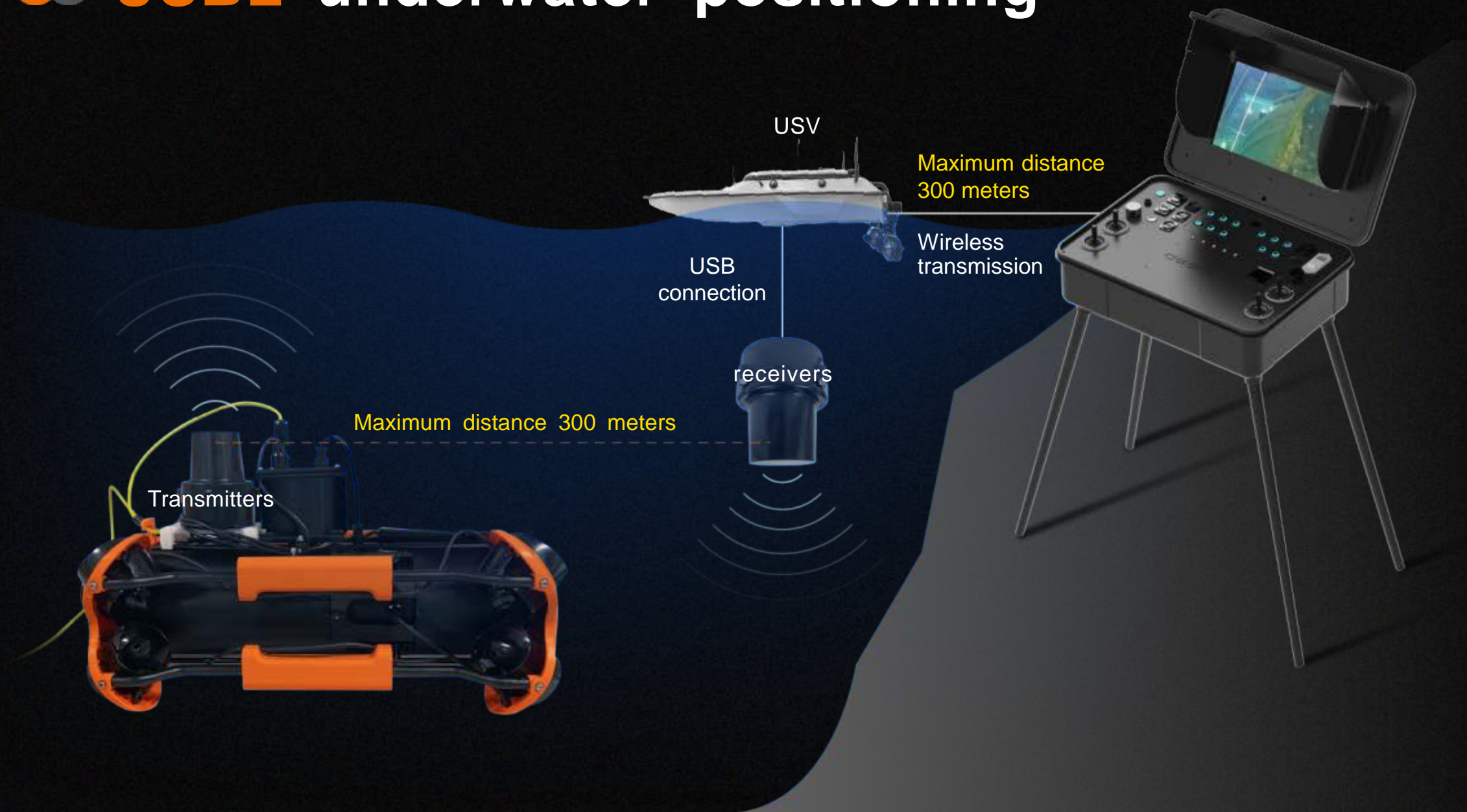


Control Console, be visible in sunlight

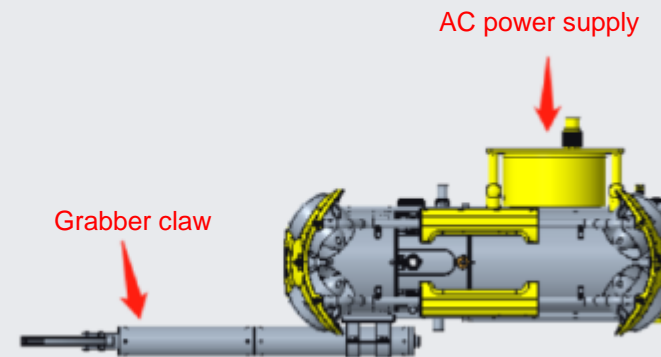
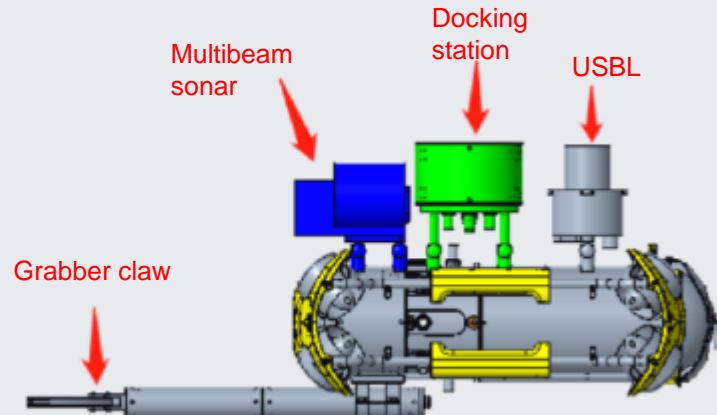
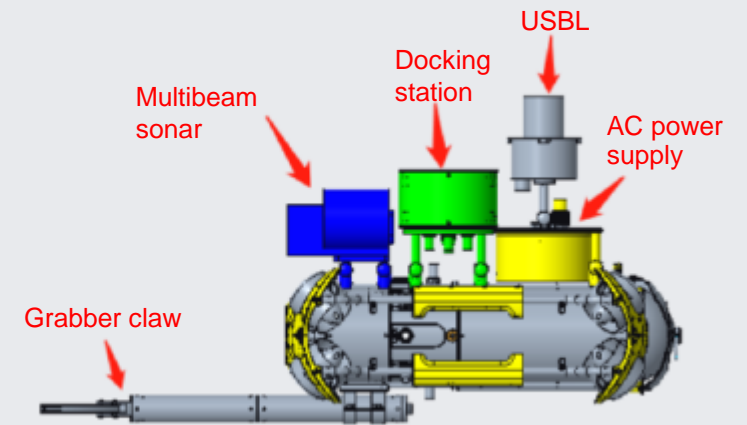
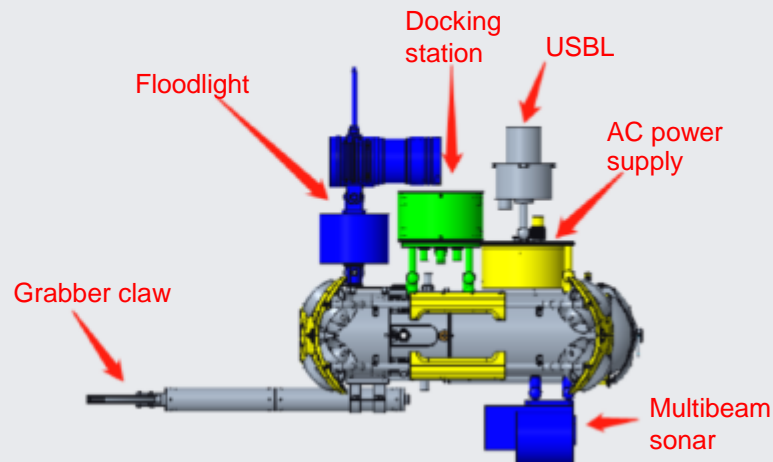
Size	484×375×178mm
Weight	≈ 8 Kg
Display	1920 x 1080, 1000cd/m2
Operating temperature	-10°C ~ 45°C
Power supply	21.6 V
Interface	RJ45*2, USB 2.0*2, QC3.0 USB*1, AC Input*1, AC output to ROV*1



●● USBL underwater positioning



M2 PRO Exclusive Enhanced Accessories combination diagram





Dive depth 150 meters (490 FT)

Explore more unknown

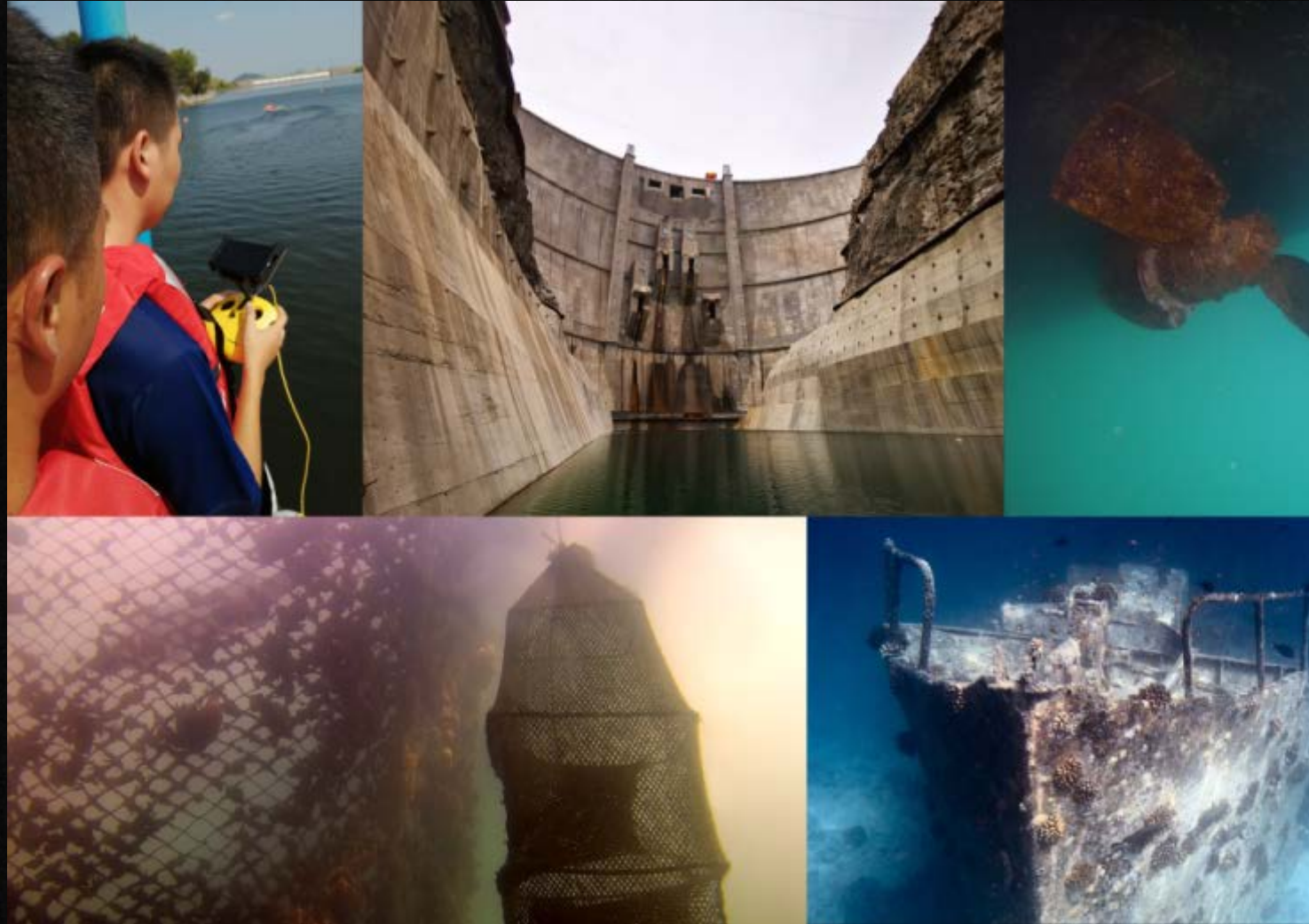
4K+EIS Image Stabilization, F1.8 Aperture



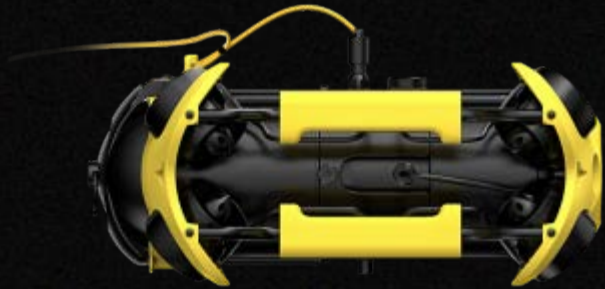
M2 Pro offers 4K and 1080p video and 12 megapixel photos.
Equipped with 1/2.3 SONY CMOS, EIS anti video-shake feature,
with 4000 lumen LED lights to capture underwater details.

Applications

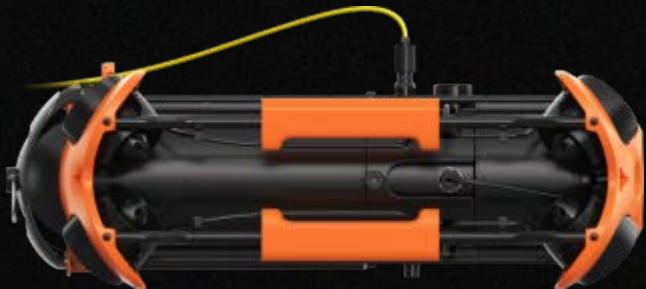
- Underwater search and rescue
- Water conservancy and hydropower inspection
- Scientific exploration
- Hull&Dock inspection
- Aquaculture inspection



Comparison of key parameters of CHASING M2 and CHASING M2 Pro



CHASING M2



CHASING M2 PRO

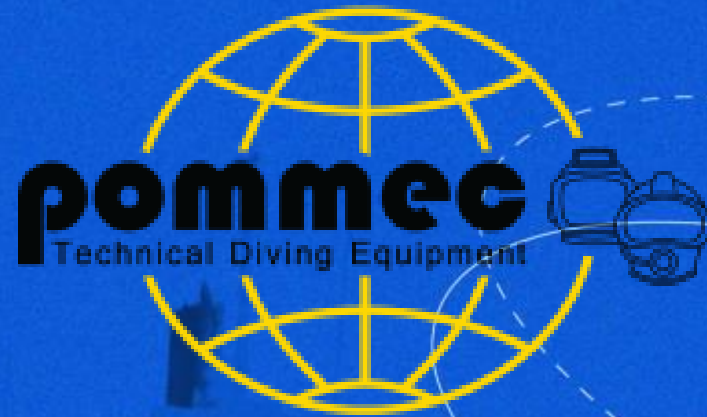
Item	CHASING M2	CHASING M2 PRO
ROV	8 Vectored-Thrusters Layout 4K+12MP+4000 lumens imaging system 4.5KG	8 Vectored-Thrusters Layout 4K+12MP+4000 lumens imaging system 6KG
power	Single motor power 100W with 3 Knots speed	Single motor power 150W with 4 Knots speed
Depth	100 meters	150 meters
Battery Life	1-2 hours(97Wh/200Wh Battery)	2.5-5 hours(300Wh/700Wh Battery)AC power supply
Accessories and extensions	General Accessories: E-Reel/Floodlight/Grabber Claw/Metal detector/Water sampler/Mort Digger	CHASING M2 PRO Exclusive Enhanced Accessories: Control Console/Docking station/USBL underwater positioning/Multibeam sonar/Auxiliary Camera General Accessories: E-Reel/Floodlight/Grabber Claw/Metal detector/Water sampler/Mort Digger

PARAMETERS COMPARISON

	P200 (CHASING M2 PRO)	FIFISH V6 PLUS	DEEPTREKKER DTG	BLUEROV
Picture				
Price	<US\$5000	>US\$10000	US\$5000~US\$10000	US\$3000~US\$5000
ROV	8 Vectored-Thrusters Layout 4K+12MP+4000 lumens imaging system 6KG	6 Vectored-Thrusters Layout 4K+12MP+4000 lumens imaging system 5KG	2 Thrusters 4K+8MP+1000 lumens imaging system 8.5KG	6 Vectored-Thrusters Layout 1080P+1000 lumens imaging system 11KG
Power	2 m/s (4 Kn)	3.2 Kn	?	1.5m/s (3 Kn)
Depth	150 meters	150 meters	200 meters	100 meters
Battery Life	2.5-5 hours (300Wh/700Wh Battery) Replaceable Batteries AC direct power supply	2 hours(156Wh Battery) Battery replacement is not supported	8 hours Battery replacement is not supported	2.5 Hours(266Wh Battery) Replaceable Battery
Accessories and extensions	CHASING M2 PRO Exclusive Enhanced Accessories: Control Console/Docking station/USBL underwater positioning/Multibeam sonar/Auxiliary Camera General Accessories: E-Reel/Floodlight/Grabber Claw/Metal detector/Water sampler/Mort Digger	Common Accessories: Grabber Claw/Underwater positioning/external camera	Common Accessories: USBL underwater positioning/3D Multibeamsonar/Water Sampler/Mort Digger/Grabber Claw	Common Accessories: Control Console/Grabber Claw/3D Multibeam sonar

Parameters

ROV	SIZE	480*267*165mm	Camera	CMOS	1/2.3
	WEIGHT	≈5.7KG		LENS	F1.8
	MAX DEPTH	490ft		FOCUS	1m
	MAX SPEED	2 m/s (4 Kn)		ISO RANGE	100-6400
	RUNTIME	Up to 4H		FOV	152
	BATTERY	300Wh		MAX RESOLUTION	12 Meg Pixel
	Operating Temperature	-10°C~45°C		FORMAT	JPEG/DNG
Remote Controller	SIZE	160*155*125mm		VIDEO	UHD:3840*2160 (4K) 30fps FHD:1920*1080 (1080p) 30/60/120fps
	WEIGHT	685g		SLOW MOTION	720p: 8x (240fps) 1080p: 4x (120fps)
	BATTERY	2500mAh		TIME LAPSE	4K/1080p supported
	RUNTIME	≥6H (depending on the environment)		VIDEO STREAM	60M
	WIRELESS	Wi-Fi supported		VIDEO FORMAT	MP4
	HDMI	Support		SD Card	128G
	HANDLE SPRING	Maximum support 13 inch			
CHARGER	POWER	2.9A/25.2V	SENSOR	IMU	3 axis gyro
	ROV CHARGING TIME	4.5H			accelerometer
	RC CHARGING TIME	2H			compass
LED	BRIGHTNESS	2*2000 Lumens		DEPTH SENSOR	< ±0.25m
	COLOR TEMPERATURE	5000K~5500K		TEMPERATURE SENSOR	< ±2°C
	CRI	85			
	DIMMING	THREE GEARS			



Check with us for more info and prices

sales@pommec.com

www.pommec.com